

PURCHASE YOUR PERFECT CAR WITH



SAHARA MOTORS

Sahara Motors Dubai :- *About Us*

- **Sahara Motors** is well known for exporting Brand New Cars from Dubai, UAE. Sahara Motors was established in 2011 and our decade-long experience and expertise in handling various export markets and customers have made Sahara Motors the No.1 in the Brand New Car export business from Dubai to the world.
- We are specialists in supplying genuine tax-free brand new Toyota cars like Sedans, SUVs, Pickup Trucks, buses, Van, **customized vehicles** etc. for customers spread across the world.
- **Sahara Motors Dubai**, an **ISO 9001:2015 Certified company**, has been dealing with so many clients and provides transport solutions to meet their needs over a long period of time, which has made it the leader in the New Car export business.
- Our product range extends from low-cost budget vehicles to premium luxury riding options and our association with leading brands ensures that the customer is always endowed with superior quality, value for money, and the best solution for their transporting needs.



Certificate No: 40000186 QM15

ISO 9001:2015



WE BELIEVE IN BEING RELIABLE

2022 MODEL TOYOTA LAND CRUISER 300 VX-R V6 3.3L DIESEL TWIN TURBO AUTOMATIC TRANSMISSION

MODEL CODE – FJA300L - GNUZYV

TECHNICAL FEATURES

ENGINE: F33A-FTV, 3.3L, TWIN TURBO
OUTPUT(HP/RPM): 302/4000
TORQUE(NM/RPM): 700/2600
TRANSMISSION: 10 SPEED AUTOMATIC
TERRAIN: 4X4
TIRE SIZE: 265/55R20
FUEL TANK CAPACITY: 110 LTR
SEATING CAPACITY: 7
FUEL EFFICIENCY(KM/L): 12.5
EMISSION STANDARD – EURO IV

INTERIOR FEATURES

AIR CONDITION: FOUR-ZONE
SEAT MATERIAL: PREMIUM LEATHER
WOOD GRAIN PACKAGE: WALNUT
STEERING WHEEL: LEATHER
OPTITRON METER WITH MULTI-INFORMATION
DISPLAY 7” SCREEN
POWER SEATS: DRIVER+PASSENGER
ELECTRIC PARKING BRAKE WITH BRAKE HOLD
REMOTE ENGINE STARTER WITH MOBILE APP
REAR ARMREST
POWER TILT & TELESCOPIC STEERING COLUMN AND
MEMORY
VENTILLATED SEATS: FRONT & 2ND ROW
WIRELESS CHARGER
DRIVER MEMORY FUNCTION
THIRD ROW POWER SEATS
HEAD UP DISPLAY
AUDIO&ENTERTAINMENT SYSTEM
AUDIO: AM/FM+FM SUB +DAB+ ROOF(TEL+GPS)) 12.3”
NAVIGATION
NUMBER OF SPEAKERS: 14JBL
APPLE CARPLAY & ANDROID AUTO
11” REAR SEAT ENTERTAINMENT WITH BLUETOOTH
CONNECTED HEADPHONES

EXTERIOR FEATURES

ALLY WHEELS 20” (265/55R20)
SUNROOF
ROOF RAIL: INTEGRATED
DOOR MIRRORS+POWERED RETRACTABLE: CHROME
LED HEADLIGHTS WITH DRLS
LED FRONT FOG LAMPS
HEADLIGHT LEVELING: AUTO
ROOF SPOILER
FRONT&REAR BUMPERS: AEROKIT+PLATING
POWERED BACK DOOR: WITH KICK SENSOR
HEADLIGHT CLEANERS

SAFETY FEATURES

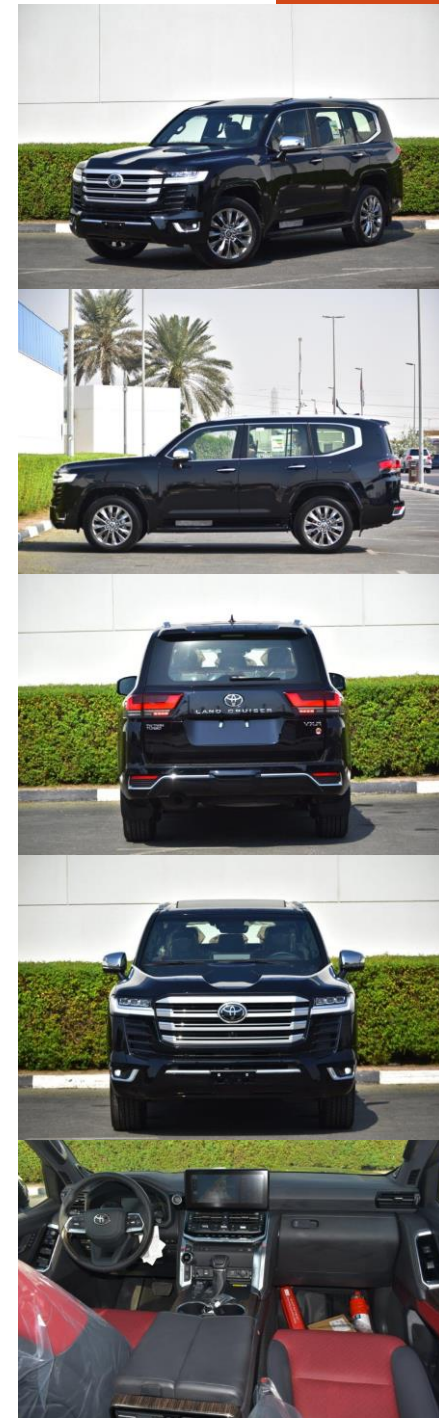
ANTI-LOCK BRAKING SYSTEM (ABS), BRAKE ASSIST (BA)
DUAL FRONT & KNEE AIRBAGS
SIDE & CURTAIN AIRBAGS
DIFFERENTIAL LOCK: TORQUE SENSING LSD
REAR VIEW CAMERA: PANAROMIC VIEW + WASHER
CRAWL CONTROL
E-CALL: EMERGENCY CALL SYSTEM
3D MULTI TERRAIN MONITOR
ADAPTIVE VARIABLE SUSPENSION(AVS)

TOYOTA SAFETY SENSE PACKAGE

CRUISE CINTROL: DYNAMIC RADAR CRUISE
PARKING SUPPORT BRAKE
LANE DEPARTURE ALERT(LDA)+STEERING VIBRATION: LANE
TRACE ASSIST
AUTO HIGH BEAM: ADAPTIVE HIGH BEAM SYSTEM
PRE-COLLISION SYSTEM (PCS)
BLIND SPOT MONITOR

DIMENSIONS AND WEIGHT

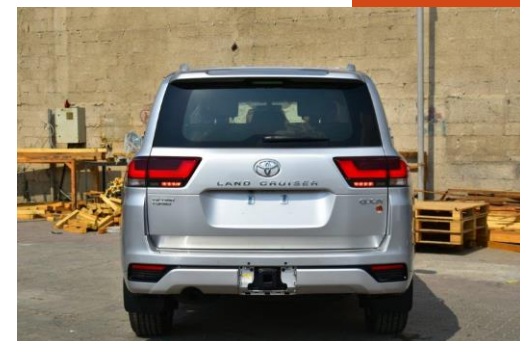
DIMENSIONS (MM): L 5145 X W 1980 X H 1890
GROSS WEIGHT(KG):3,230



2022 MODEL TOYOTA LAND CRUISER 300 GXR-V V6 3.3L TWIN TURBO **AUTOMATIC TRANSMISSION**

MODEL CODE-FJA300L-GNUAYV
ENGINE & DISPLACEMENT CC-3346
DRIVETRAINHP (SAE NET) / RPM- 302
TORQUE (SAE NET) KGM /RPM-71.4
ENGINE TYPE-F33A-FTV, V6, DOHC - TWIN TURBO
FUEL SYSTEM-FUEL INJECTION, EURO 0 (W/O OBD)
FUEL TYPE-DIESEL
FUEL TANK CAPACITY LTRS-110(SINGLE)
TRANSMISSION-10- A/T MULTI MODE
4WD OPTIONS-FULL TIME
DIFF. OPTION- TORQUE SENSING CENTRE LSD+CENTRE &
REAR DIFF LOCK
TIRE SIZE- 265/55R20
WHEEL CAP-ALLOY
STEERING-POWER/TILT- WITH/WITH
TELESCOPIC-WITH (POWER)
BRAKE-FRONT/REAR-VENT.DISC/VENT.DISC
SUSPENSION-FRONT DBL WISHBONE(IND.)
REAR SUSPENSION-4 LINK -
SAFETY ABS + BA + VSC + ATRC + TSC + HAC
AIR BAGS- D + P + KNEE (D+P) + CURTAIN + SIDE (FR)
BUMPER FRONT & REAR - COLOUR KEYED AERO + BLACK
PLATING
DOOR HANDLES-COLORED
HIGH MOUNT STOP LAMP-WITH
OUTER MIRRORS-TURN SIGNAL WITH + RETRACTABLE
(AUTO) + ECM + REVERSE LINK
SIDE STEP WITH COVER
SPOILER
SUN/MOON ROOF
WINDSHIELD GLASS-GREEN W/TOP BAND + HEAT SHIELD
ACCESSORY METER-4 "MULTI INFORMATION DISPLAY
CONSOLE BOX <REAR>- (SYNTHETIC LTHR) WITH REAR AC
VENT/COOL BOX
DRIVE MODES- 3 MODES (NORMAL /ECO/SPORT)
INNER REAR VIEW MIRROR-ELECTROCHROMIC
FR. SEAT-FR. SEAT BELT-3PELRX2 + PT + FL(1)
HEADREST-2
POWER SEAT-WITH(D+P)
VERTICAL SEAT ADJUSTER-WITH (D+P:POWER)
RR. SEAT-RR. SEAT BELT- 3PELRx5
HEAD REST- 3 (2ND ROW) + 2 (3RD ROW) 2ND ROW - 40:20:40 -
3RDROW SEAT FOLDING MANUAL

SEAT MATERIAL- SYNTHETIC LEATHER
SEATING CAPACITY-7
STEERING WHEEL- LEATHER + WOOD(TYPE1 BROWN) + AUDIO + MID
+ BT + CRUISE + VOICE (PLATING)
SUN VISOR- D+P+VANITY MIRROR+BULB+SLIDE
AC/HEATER- AUTOMATIC (FR: LH & RH IND CONTROL)/REAR AUTO /
WITH HEATER (FR)
CRUISE CONTROL
ILLUMINATED ENTRY SYSTEM- IGN. SW + ROOM LAMP + FRONT
SCUFF PLATE ILLUM.
KEYLESS ENTRY-SMART ENTRY (ALL DOORS) + PUSH
START+PBD (LOW)
POWER ANTENNA-GLASS INTEGRATED
POWER DOOR LOCK
POWER WINDOW
RADIO-AM/FM
STEREO- 9" DISPLAY AUDIO + BT + USB + WIFI, 6 SPKS
WINDOW DEFOGGER
WIPER FRONT- INTERMITTENT
WIPER REAR-INTERMITTENT
ANTI THEFT SYSTEM-WITH W/SECURITY HORN
BACK CAMERA- WITH BGM
CHILD RESTRAINT SYSTEM-WITH (SEAT) X2
COMBINATION METER-OPTITRON TYPE
EMBLEM-70TH ANNIVERSARY + TWIN TURBO
FLOOR MATS
FRONT FOG LAMP-WITH - LED
HEADLAMP CLEANERS
HEADLAMP LEVELING FUNCTION-MANUAL
HEADLAMPS-(LOW / HIGH) - (LOW / HIGH) - LED + LED DRL (TYPE1
REFRACTIVE TYPE)
PARKING SENSORS-PARKING SUPPORT FR4 + RR4)
TOWING HITCH
RADIATOR GRILLE- CHROME + SILVER
REAR BUMPER STEP GUARD
REAR FOG LAMP
REAR LUGGAGE DOOR-HATCH TYPE: POWER BACK DOOR +
AUTO/EASY CLOSER DOOR
REMOTE ENGINE STARTER-WITH (1-WAY)
ROOF RAI
SPARE WHEEL CARRIER-FLOOR W/ LOCK

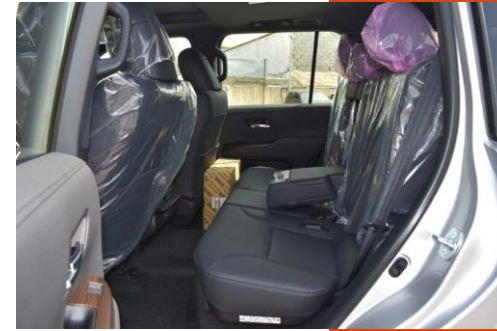


(Continue...)

**FIRE EXTINGUISHER
GRADE MARK-GXR
PARKING BRAKE-ELECTRIC TYPE+BRAKE HOLD
REAR COMBINATION LAMP-LED
WOODGRAIN PACKAGE-WITH(CONSOLE
BOX+STEERING+DOOR TRIM)-TYPE1 BROWN
DOOR INSIDE HANDLE-PLATING
INSTRUMENT PANEL-HIGH
TIRE PRESSURE MONITORING SYSTEM
USB FAST CHARGER-FR1 + RR1(2) + RR2(2)**

DIMENSIONS AND WEIGHT

**LX WX H MM-5015 X 1980 X 1890
WHEEL BASE MM-2850
GROUND CLEARANCE MM-235
MIN. TURNING RADIUS (M)-5.9
GROSS VEHICLE WEIGHT (KGS)-3230**



Sahara Motors Dubai :- *What makes us Trusted and Reliable brand new car exporter?*

- Sahara Motors, an [ISO 9001-2015 Certified](#) Company
- We are a Verified [Global Trusted E-Network member](#) by Dubai Chamber of Commerce.
- We offer great value for your money and a wide selection of [Toyota Cars](#) at Sahara Motors Dubai.
- **Excellent Customer Service 24 X 7**
- We also do Customization of Vehicles as per requirements of our customers.
- We provide **logistic support** to our customers.
- We can transport vehicles at the most competitive price in any part of the world for our customers.
- We have a professional and experienced team that delivers a delightful experience to its customers when they purchase their dream vehicle from Sahara Motors, Dubai.
- We establish long-term business through our high-end service and partnerships based on respect and transparent deals.

WE BELIEVE IN BEING RELIABLE

Sahara Motors Dubai :- *Contact Us*

Address: Sahara Motors, Block 3, Showroom 25, Dubai Auto Market,
Al Awir, Ras Al Khor, Post Box - 47876, Dubai, U.A.E

Contact Number: +971 4 3332623, +971 4 3455924

Call/WhatsApp: +971 56 9963661 / +971 56 1144253 / +971 544400938 / +971 569957707

Fax: +971 4 3332643

email: info@saharamotorsuae.com

Website: www.saharamotorsuae.com



WE BELIEVE IN BEING RELIABLE